



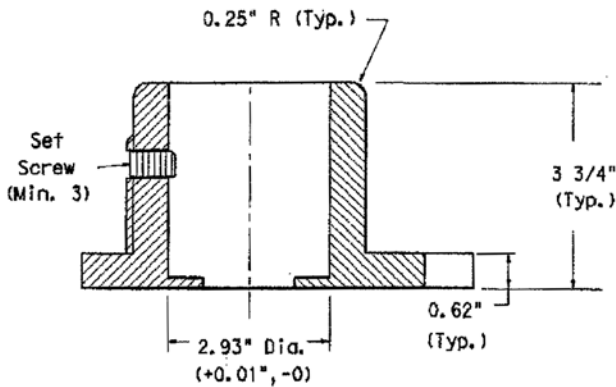
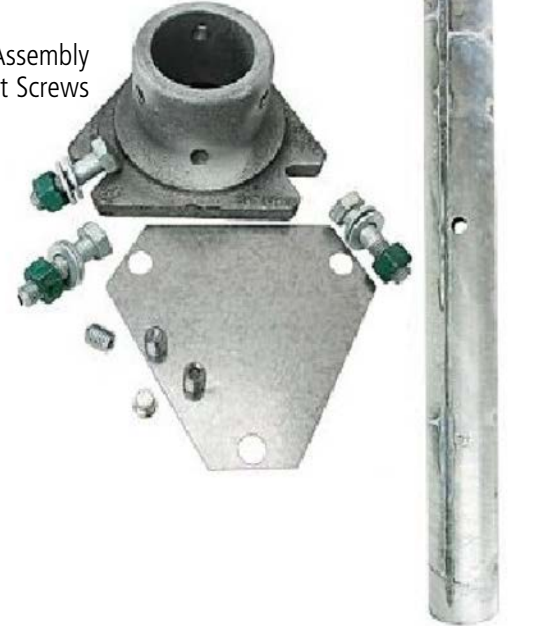
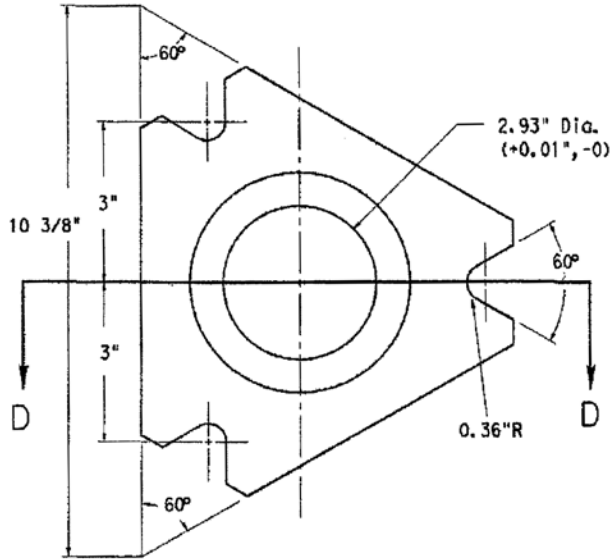
# 2-7/8" Galvanized Steel Pole System

## Features

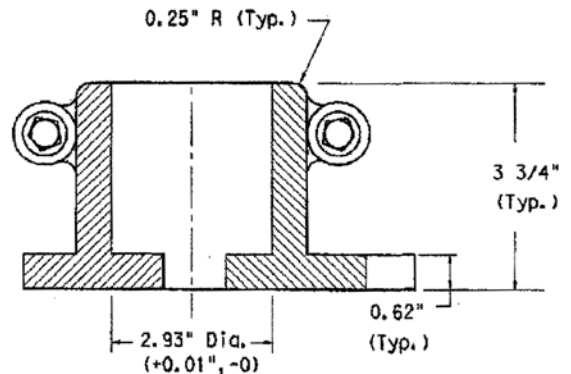
- For TS30, T40 signs, TS50 beacons and TS60 RRFBs.
- 2-7/8" O.D. galvanized steel pole.
- Meets breakaway requirements of FDOT and MUTCD.
- Includes three 5/8" x 2-1/2" anchor bolts.
- Available lengths: 10 ft., 12 ft., or 14 ft.

Ground Stub with Plate

Collar Assembly with Set Screws



Set Screw type Section D-D



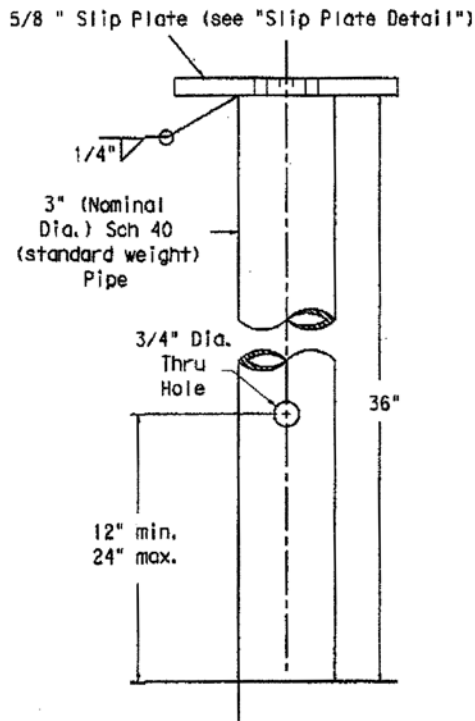
Bolt Clamp type Section D-D

Steel Slipbase fabrication shall conform to ASTM A36 or A572, if fabrication consists of ductile iron casting it shall conform to ASTM A536 Grade 65-45-12 and be galvanized per ASTM A153 Class A.

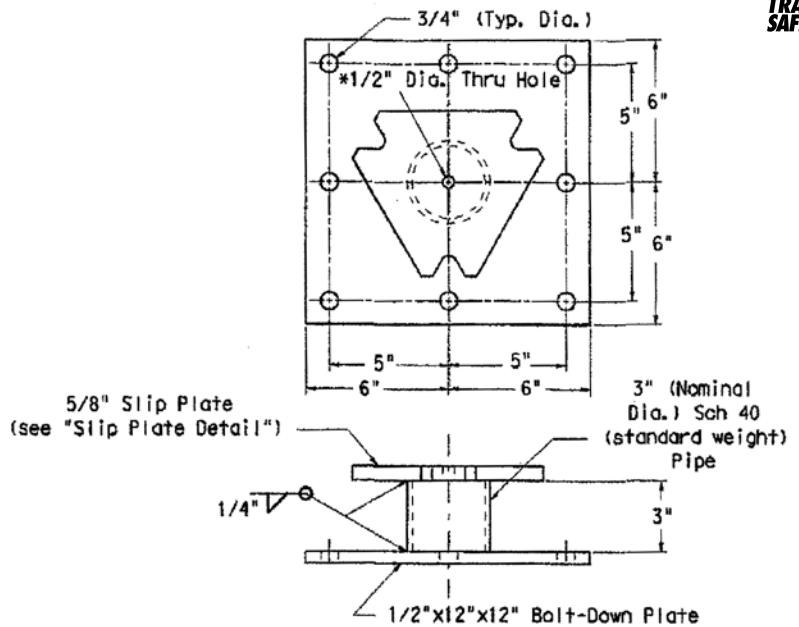
Finished components shall be permanently marked to indicate manufacturer, Method, design and location of markings are subject to the approval of the TxDOT Traffic Standards Engineer.

A list of approved Triangular Slip bases can be found at [http://www.txdot.gov/business/producer\\_list.htm](http://www.txdot.gov/business/producer_list.htm)

## SLIPBASE DETAIL



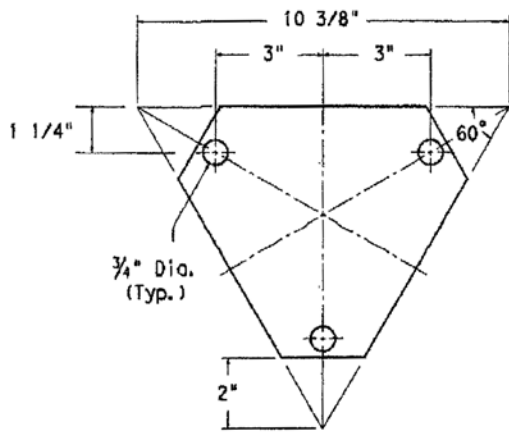
Pipe shall conform to ASTM A53 Gr B, A500 Gr B, or A501. Galvanize according to ASTM A123 after all fabrication is completed. Finished components shall be permanently marked to indicate manufacturer. Method, design and location of markings are subject to the approval of the TxDOT Traffic Standards Engineer.



Pipe shall conform to ASTM A53 Gr B, A500 Gr B, or A501. Bolt-down plate shall conform to the same material requirements specified for the slip plate. Galvanize according to ASTM A123 after all fabrication is completed. Finished components shall be permanently marked to indicate manufacturer. Method, design and location of markings are subject to the approval of the TxDOT Traffic Standards Engineer.

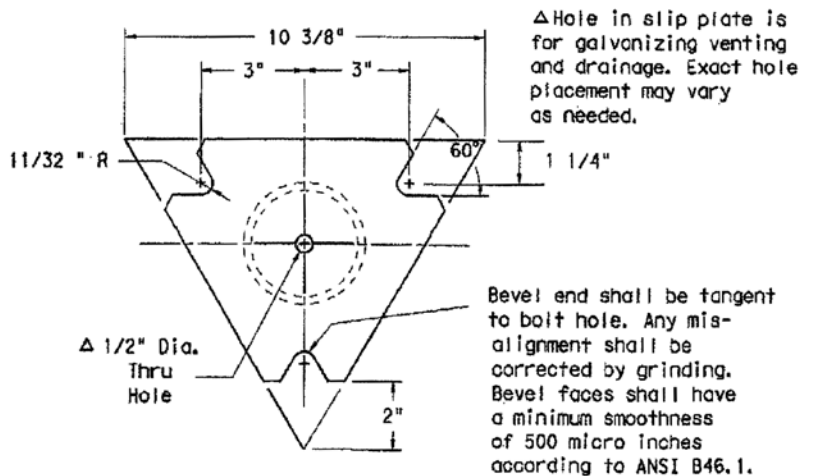
\* Hole in slip plate and bolt-down plate is for galvanizing venting and drainage. Exact hole placement may vary as needed.

STUB



Bolt Keeper Plate shall be manufactured from 26 to 30 gauge galvanized sheet steel.

BOLT-DOWN ANCHOR



Slip plate shall conform to ASTM A36 or A572.

BOLT KEEPER PLATE

SLIP PLATE DETAIL